

MICHIGAN

WELDING CO.

180A MULTI PROCESS WELDER

DC Inverter



..172845 MULTI180S2

MIG	UP TO 1.0 mm SOLID WIRE
STICK	UP TO 3.2 mm ELECTRODES
DC TIG	WELDS UP TO 10 mm
10A	12 kVA GENERATOR
WEIGHT	13 kg

FEATURES

- ▶ Stepless voltage and wire feed control
- ▶ Dual Digital Display, volts and amps
- ▶ Adjustable inductance
- ▶ Spool gun capable
- ▶ Thermal overload switch
- ▶ Suits 1kg and 5kg wire spools
- ▶ Fan cooled
- ▶ IGBT Inverter technology
- ▶ 3 Year limited warranty

SPECIFICATIONS

- ▶ Input voltage: 220-240V- 50/60Hz
- ▶ Plug & cable: 10A, 3G2.5mm² Core (2.0m L)
- ▶ I_{eff} (input effective amps): 9.2A (MIG), 8.6A (STICK), 8.2A (TIG)
- ▶ I_{lmax} (max effective amps): 29A (MIG), 27A (STICK), 18.3A (TIG)
- ▶ MIG function output amp range: 30-180A
- ▶ MIG duty cycle at 40°C -10% @ 180A
- ▶ STICK (MMA) function output range: 10-160A
- ▶ STICK (MMA) duty cycle at 40°C -10% @ 160A
- ▶ TIG function output: 10-160A
- ▶ TIG duty cycle at 40°C -20% @ 160A
- ▶ Power Source weight: 13.2kg
- ▶ Recommended generator size: 12kVA
- ▶ Suits 0.6 - 1.0mmØ solid MIG wire
- ▶ Suits 0.8-1.0mm flux core wire
- ▶ Maximum size GP electrode: 3.2mmØ
- ▶ IP Rating: IP21S
- ▶ Compliant to AS60974.1
- ▶ Dimensions: (LxWxH) 601x401x450mm

PACKAGE CONTENTS

- ▶ 180A Multi Process Welder
- ▶ 3m MIG Torch with Euro Connector
- ▶ 3m Twist-lock electrode holder
- ▶ 3m Earth clamp
- ▶ 3m Gas hose
- ▶ Contact tips 0.8, 0.9 (installed)
- ▶ Gas Shroud (installed)
- ▶ V Roller 0.8-0.9mm (Solid) (installed)
- ▶ Knurled Roller 0.8-0.9mm (Gasless)
- ▶ Large dinse 35-50
- ▶ 10A Plug & cable
- ▶ Argon flowmeter
- ▶ Operating manual

COMPATIBLE PRODUCTS

ACCESSORIES

- ..71185 200mm MIG Welding Pliers
- ..117568 4m 250A Earth Clamp 35-50 Dinse Plug
- ..117561 1.8m x 1.8m Leather Welding Blanket

Torch Stands

- ..126876 Magnetic MIG Torch Stand
- ..126877 Magnetic TIG Torch Stand

Regulators

- ..111586 Argon Regulator
- ..111633 Argon Flowmeter

Welding Table & Trolleys

- ..117566 Multi purpose Welding Table
- ..100179 Heavy Duty Welding Trolley
- ..111560 Heavy Duty Welding Trolley
- ..178718 Welding Trolley With Locking Cabinet

Welding Curtains & Frames

- ..123300 1.74m x 1.74m Red Welding Curtain
- ..138366 1.74m x 1.74m Green Welding Curtain
- ..123301 1.8m x 1.8m Welding Curtain Frame
- ..123302 1.8m Welding Curtain & Frame Kit

TORCHES

MIG

- ..111548 4m MB15 MIG Torch - Euro Connector
- ..138794 4m 150A MIG Spool Gun

TIG

- ..114704 4m 17V Lift TIG Torch - Large Dinse Plug

Electrode Holder

- ..117570 4m 250A Twist-lock 35-50 Dinse Plug

TORCH CONSUMABLES

MIG Contact Tips - MB15 torches

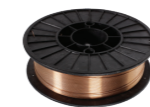
- ..111561 0.6mm - 10 Pack
- ..111562 0.8mm - 10 Pack
- ..111563 0.9mm - 10 Pack
- ..111564 1.0mm - 10 Pack

MIG Gas Shroud - MB15 torches

- ..111565 2 Pack

Torch Liner

- ..126878 4m Universal MIG Torch Liner



All products exclusive to Total Tools www.totaltools.com.au



COMPATIBLE FILLER METALS

E71T-11 Flux Cored Gasless Wire

- ..111574 0.8mm 0.9kg 100mm Spool
- ..111575 0.8mm 4.5kg 200mm Spool
- ..111576 0.9mm 0.9kg 100mm Spool
- ..111577 0.9mm 4.5kg 200mm Spool

ER70S-6 Mild Steel Wire

- ..111578 0.6mm 5kg 200mm Spool
- ..111579 0.8mm 5kg 200mm Spool
- ..111580 0.9mm 5kg 200mm Spool

E6103 GP Electrodes

- ..111570 2.5mm 2.5kg 350mm
- ..111571 2.5mm 5kg 300mm

PROTECTIVE EQUIPMENT

Auto Darkening Helmets

- ..154540 Flip Front Helmet
- ..140104 Helmet - Black
- ..140105 Helmet - Carbon Fibre
- ..174215 Helmet - Hazard
- ..116237 PAPR Helmet
- ..145663 Professional Helmet - Black
- ..145664 Professional Helmet - Blue
- ..140106 Professional Helmet - Blue Flame
- ..143294 Professional Helmet - Aussie Flag

Leather Welding Gloves

- ..159308 MIG Gloves - L
- ..159309 MIG Gloves - XL
- ..159310 TIG Gloves - L
- ..159311 TIG Gloves - XL
- ..159312 Heavy Duty Gloves - L

Welding Jackets

- ..128588 Jacket Orange - L
- ..126888 Jacket Orange - XL
- ..128589 Jacket Orange - XXL